



## China (Chongqing) International Automotive Technology Expo 2017

Time: March. 22-24, 2017

Venue: Chongqing International Expo Center



### S&V Samford March Edition Newsletter

#### Automotive Expo 汽车展览会

We will be at the **China (Chongqing) International Automotive Technology Expo 2017** on the 22<sup>nd</sup> -24<sup>th</sup> March, 2017

我们将于 2017 年 3 月 22 日至 24 日在中国（重庆）国际汽车技术展览会 2017 展出有关 NVH 的产品。

**Date : March. 22-24, 2017**

日期 : 2017 年 3 月 22 日至 24 日

**Venue : Chongqing International Expo Center , Booth no. 856**

地点 : 重庆国际博览中心摊位 856 号

**Time : 09:00 – 16:30**

时间 : 早上九时至下午四时三十分

**We hope to see you there!**

For more Details , Please Visit <http://e.chautotechexpo.com/>  
有关详情, 请浏览 <http://e.chautotechexpo.com/>

### Monthly Feature Products

**ONO SOKKI Digital Laser Doppler Surface Velocity Meter - LV-7100**

**ONO SOKKI Portable Data Recorder for Acoustics & Vibration**

**ONO SOKKI Compact & High Sensitive G.P.S. Speedometer - LC- 8300**

**ARESTM Asset Management Platform**

**CSI 2600 Machinery Health TM Expert**

**TECA Wideband Data Recorder WX-7000 series**

### About Us

**S&V Samford Ltd.**  
[www.svsamford.com](http://www.svsamford.com)



We are devoted to provide quality and innovative solutions for Customers with interest in Sound and Vibration, Condition monitoring and Air Quality monitoring. With a team of passionate professionals, we provide dedicated support and continue education to our customers.

### Contact:

Email: [sales@svsamford.com](mailto:sales@svsamford.com)

Tel : (852) 2833 9987

Fax : (852) 2833 9913

# Digital Laser Doppler Surface Velocity Meter

ONOSOKKI



## Laser Doppler Surface velocity Meter- LV-7000 series

LV-7000 series detects speed, uneven speed, distance, length of moving object or rotating object by non-contact detection with high sensitivity and high response. You can install and measure easily in the place where had been difficult in measurement so far.

The LV-7000 series enables evaluation of product features and helps to understand the phenomena more accurately. Non-contact and accurate laser detection is useful for improving parts quality, and useful for reducing loss of material. [Video !](#)

### Features

- High sensitivity detection, safety Class2 laser protection glass, laser control regions / controller.
- Non-contact detection, No- load measurement
- Simple operation but high function.

### Application

- **Torsion Vibration measurement**
- **Speed and behavior measurement of tire**
- **Behavior measurement of pulley/belt**
- **Measurement for material evaluation**
- **Speed . uneven speed measurement**
- **Measurement of winding length**

[Read More](#)

## About Ono Sokki

<https://www.onosokki.co.jp/English/english.htm>

Ono Sokki is a measuring instrument manufacturer focused on the tasks of applying digital technology to measurement applications, and has a proud history in that field, including development of Japan's first digital counter 40 years ago, and myriad products using digital technology.

Their products, reputed to be "World First" or "Industrial Standard" in various fields, reflect their constant pursuit of original technologies. Under this motto of "Change & Challenge for Solving the World's Toughest Problems", ONOSOKKI aim to build a network-oriented company supported by human resources backed by high technologies.





## Portable Data Recorder – DR7100



ONOSOKKI

### Portable Data Recorder – DR7100

The DR-7100 is a portable data recorder for acoustic and vibration with high accuracy.

In recent years, we are living surrounded by the equipments which make noise and vibration such as a car, a railroad, a household electric appliance and a wind power. These equipments are now required for [more quiet], [more comfortable] and [lower vibration] than ever.

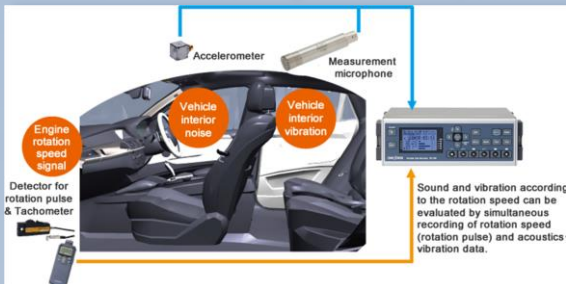
The DR-7100 greatly helps to make such comfortable acoustic environment by recording sound and vibration on site with ease and high accuracy.

#### Features

- Data recording with high speed, high accuracy (4ch 40kHz range 24 bit)
- Dynamic range of 90dB or more
- Equipped with a connector for an rotation pulse input
- Available for SDHC 8 GB
- Speedy setup by TEDS sensor
- Compact body of A5-size
- 2-Unit synchronicity function(option)  
1\*40kHz range: option( 20kHz band frequency: standard)

#### Example

-Simultaneous recording of rotation speed and acoustics vibration data



-8ch Data recording by 2-unit synchronicity function



[Read More](#)

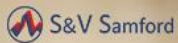
### About Ono Sokki

<https://www.onosokki.co.jp/English/english.htm>

Ono Sokki is a measuring instrument manufacturer focused on the tasks of applying digital technology to measurement applications, and has a proud history in that field, including development of Japan's first digital counter 40 years ago, and myriad products using digital technology.

Their products, reputed to be "World First" or "Industrial Standard" in various fields, reflect their constant pursuit of original technologies. Under this motto of "Change & Challenge for Solving the World's Toughest Problems", ONOSOKKI aim to build a network-oriented company supported by human resources backed by high technologies.





## G.P.S Speedometer -LC 800



ONOSOKKI

### Compact & High Sensitive G.P.S. Speedometer - LC- 8300

#### Automation Imager MN4100

LC-8300 compact and high-sensitive GPS speedometer can measure speed, distance and other vehicles. For two-wheel vehicles, or construction vehicles etc. by satellite signals of GPS/ GLONASS.

#### Features

##### High- sensitive receiver:

Allow the GPS/ GLONASS antenna to be installed inside a vehicle for measurement.

##### Compact design:

170x 120x41(mm) and approx. 0.75kg of the main unit, Build-in IMU, only three units (main unit, display and antenna) are necessary to measure.

##### Data Logging without a PC:

Data can be stored in the attached USB memory or internal storage memory.

##### Easy to operate with a touch panel:

The touch panel display improves visibility and ease of operation.

##### High accuracy:

Accurate of +/- 0.2km or less (speed) and +/- 0.2% less (distance).

[Video!](#)

#### Specification

**Update output frequency** : 100 Hz

**Standard Measurement items** : Horizontal speed (km/h), horizontal distance (m), time (s), UTC time, number of satellite capture, HDOP(Horizontal Dilution of Precision), Heading (°), North speed (km/h), East speed (km/h), North distance (m), East distance (m), travelling distance (m), latitude (dms), longitude (dms), altitude (m )

**Optional Measurement Items** : Lateral distance (m), vertical speed (km/h), vertical distance (m), VDOP(Vertical Dilution of Precision) , lateral sideslip amount (m), roll angle (°), pitch angle (°), yaw angle (°), X acceleration (m/s<sup>2</sup>), Y acceleration (m/s<sup>2</sup>), Z acceleration (m/s<sup>2</sup>), X angular speed (°/s), Y angular speed (°/s), Z angular speed (°/s), gradient (%)

[Read More](#)

#### About Ono Sokki

<https://www.onosokki.co.jp/English/english.htm>

Ono Sokki is a measuring instrument manufacturer focused on the tasks of applying digital technology to measurement applications, and has a proud history in that field, including development of Japan's first digital counter 40 years ago, and myriad products using digital technology.

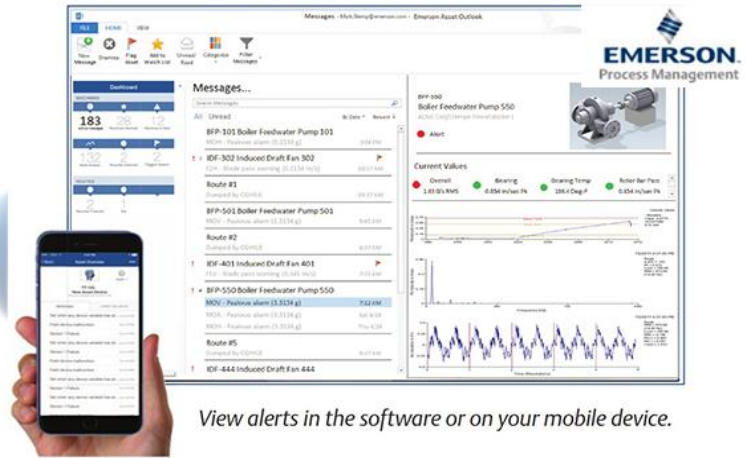
Their products, reputed to be "World First" or "Industrial Standard" in various fields, reflect their constant pursuit of original technologies. Under this motto of "Change & Challenge for Solving the World's Toughest Problems", ONOSOKKI aim to build a network-oriented company supported by human resources backed by high technologies.

#### Related Products:

- [Portable Data Recorder for Acoustics & Vibration](#)
- [EC-2100 Elevator Speedometer](#)
- [Laser Doppler Surface Velocity Meter-LV-7000 series](#)



## ARES™ Asset Management Platform



View alerts in the software or on your mobile device.

## ARES™ Asset Management Platform

Emerson's new ARES platform supports the next generation of AMS Machinery Manager software for integrating multiple predictive diagnostic technologies. ARES platform delivers a holistic view into your asset's health and identifies unique failure symptoms.

The ARES platform offers a human-centered design and reporting format that is intuitive and easily incorporates diagnostic and reporting sources into a single software platform for analysis of machinery health across the entire plant even on your smartphone or tablet. The health of your assets is at your fingertips anytime, anywhere.

### Next Generation AMS Machinery Manager

- Analysis tools for diagnosis and prognosis of machinery health.
- Modern communication tools for quicker, accurate decision making.
- Integration of multiple predictive maintenance technologies for a complete picture of mechanical asset health.
- Interface with other applications through OPC UA.

### Reliability Solutions

#### Open and Easy

(The ARES Platform will support new OPC UA technology, making it easy to integrate third-party monitoring software that expand the capabilities of your program.

#### Requirements

#### Ethernet / Internet Connectivity

- 1 or more Ethernet ports
- Internet connection is required to download installations, patches ,and register software.
- Internet connection is required to receive alerts and messages on the mobile application.

#### USB Port

#### Minimum Requirements: Mobile

IOS 8.0, 9.0 with Safari or Android 4.2 with Chrome 26 Mobile

[Read More](#)

## About Emerson

<http://www.emerson.com>



Emerson has boldly transformed itself to create value for our customer and shareholders. With their newly energized focus on their two core business platforms — Automation Solutions and Commercial & Residential Solutions — Emerson can confront the challenges of an increasingly complex and unpredictable marketplace from a position of strength. This allows Emerson to drive both near- and long-term value. And retain our single-trusted-partner status with the process, industrial, commercial and residential industries.

### Server Required

#### Operating System:

Window Server 2012 R2 Standard Edition  
Windows 7, 10

#### Architecture :

x64

#### Processor :

2.4GHz dual processor or faster

#### RAM :

8.0 GB

#### SQL:

Microsoft SQL Server 2014 Express  
and above

#### IIS:

IIS 8.0

#### Browsers:

IE 11, EDGE, Chrome 45

## CSI 2600 Machinery Health Expert

- Portable, 24-channel machinery
- Offers optional transient analysis
- Monitor and record all channels continuously and simultaneously.



### CSI 2600 Machinery Health™ Expert

The CSI 2600 is designed to sit upright, fit in tight spaces, or lay on its side to support your laptop. The hinged back door enables direct access to termination panes, providing numerous sensor-mounting options.

#### Introduction

Portable vibration analyzers are the cornerstone of a successful predictive maintenance program. However, some anomalies, like root cause investigations and machine train evaluations, can surpass the capabilities of even the most sophisticated 2-channel portable data collector. For balance of plant critical machines, a mobile, multi-channel monitoring solution with rolling element and gearbox monitoring technology is necessary for root cause analysis and to determine if the machine will survive to the next outage.

#### Features

- **Innovative, Powerful** (8-256 hours of continuous, simultaneous data recording, live plot display, replay mode, support for external hard drive arrays to extend recording and storage options)
- **Getting Started is Simple and Fast.** (with a library of database templates to choose from the setup is simple and fast)
- **Continuous Data Recording, No Snapshots** (data recording is both continuous and simultaneous on all channels versus snapshots of data.)
- Monitoring and recording function remain uninterrupted, even while you perform data manipulation.
- Instant Replay
- Rolling Element Bearing Monitoring

#### Specification

Temperature range	: 0°C to 48 °C
Weight	: 29.8 lbs
Relative Humidity	: 0 - 95%
Autosensing input	: 120 - 240 VAC
Power consumption	: 80 watts

[Read More](#)

#### About Emerson

<http://www.emerson.com>

Emerson has boldly transformed itself to create value for our customer and shareholders. With their newly energized focus on their two core business platforms — Automation Solutions and Commercial & Residential Solutions — Emerson can confront the challenges of an increasingly complex and unpredictable marketplace from a position of strength. This allows Emerson to drive both near- and long-term value. And retain our single-trusted-partner status with the process, industrial, commercial and residential industries.

#### Related Products:

- [Smart Wireless Vibration System](#)
- [2140 Portable Vibration Analyzer](#)
- [CSI 6500 Machinery Health Monitor](#)



## Wideband Data Recorder WX-7000 series



### Wideband Data Recorder WX-7000 series

WX-7000 provides processes to measure data in **various** fields

Frequency Bandwidth	Intuitive operation
Dynamic range	Additional function
Whole Day Extended Recording Time	Faster data transfer
Reliable and Robust Recording Media	PC control application WX Navi
Up to 128 Channels Recording	UPS Connectivity
Recording Control By External Signal	Synchronization capability with AQ-VU
Periodic File Close to avoid unexpected data loss	Analog Signal
File Format	

### Frequency Bandwidth [80kHz Wide Frequency Bandwidth]

DC to 80kHz, 16ch 16bit mode, DC to 80kHz, 8ch 24bit mode, Wide-band, Multi-channel, Stand-alone instrumentation data recorder.

### Dynamic range [100dB Wide Dynamic Range]

24bit analog to digital conversion provides a wider dynamic range than conventional systems.

### Whole Day Extended Recording Time

[ [72 times longer than the Sony SIR-1000](#) ] With the use of 1TB RDX media, the WX-7000 records 72 times longer than the Sony SIR-1000. There is no need to change media frequently to record long duration test data.

### Reliable and Robust Recording Media

RDX removable HDD and SD card can be used as recording media.

- RDX media helps provide high-speed, multi-channel and large-capacity recordings.
- SSD type RDX can be used in harsh environment. (shock and vibration)
- SD Card (SDHC) recording is convenient and is easy to handle

### Up to 128 Channels Recording

Up to 128 channel recording is available by configuring the WX-7000 main unit with 8 X 16Ch. Input/output cards. Two units can be synchronized together, this provides a maximum of 256 channel recording.

[Read More](#)

### About TEAC

<http://datarecorder.jp/en/>

TEAC AMERICA, INC. is the largest subsidiary of Tokyo-based TEAC Corporation, a billion-dollar global corporation and a world leader in recording technology for over five decades.

From simple magnetic recording devices to sophisticated digital and optical equipment to CD and DVD Printers, TEAC has created a wide variety of innovative products for creating and enjoying music, as well as disc printing, publishing, industrial and aerospace applications.

TEAC is a company committed to innovation - both in our research and development of technology and in the way we serve our customers. At TEAC, we do not wish to simply meet the future, but to help shape it as well.

